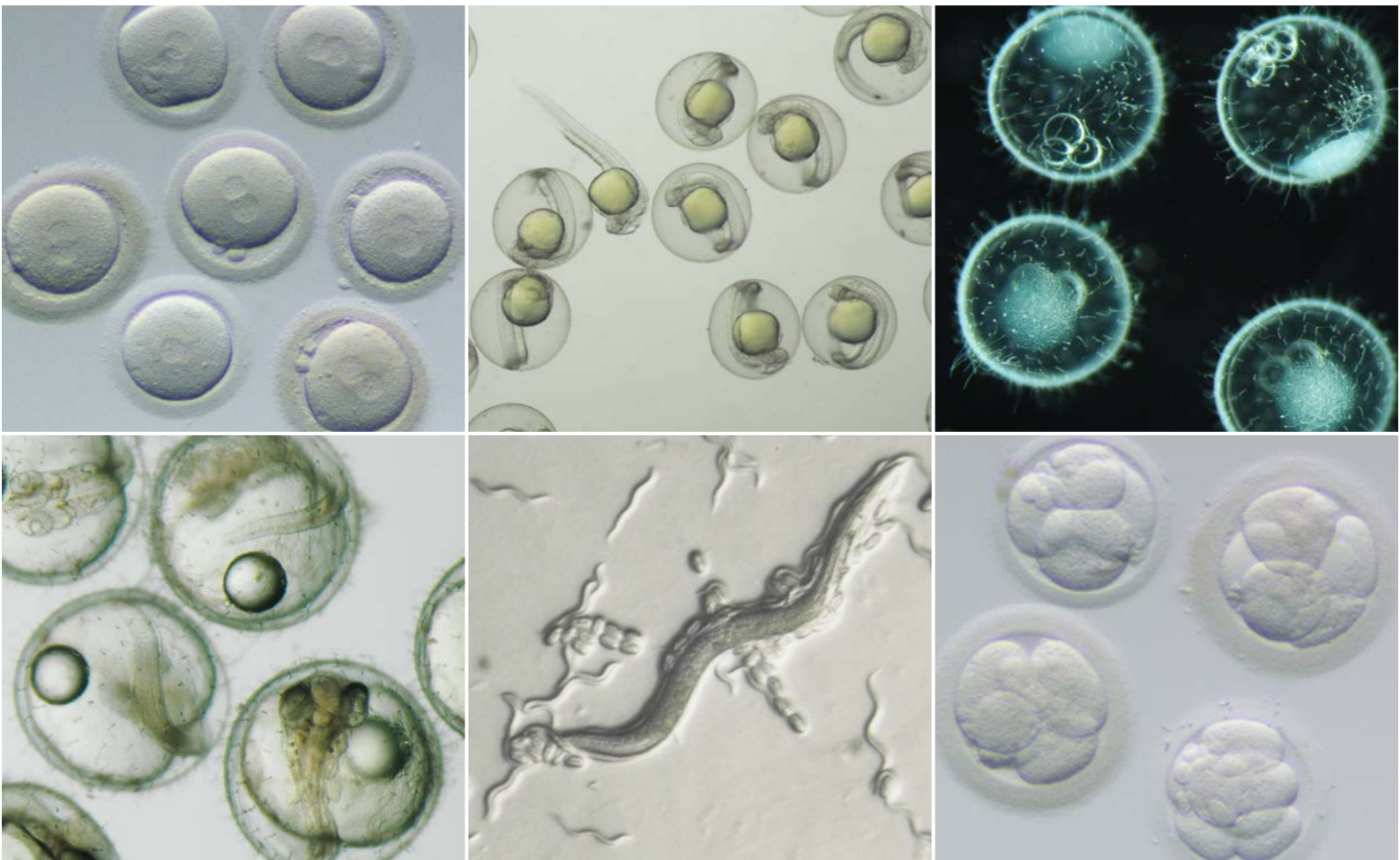


Advance Your Research with Multiple Observation
and Contrast Methods



Quad Position LED Transmitted Light Illumination Base (SZX2-ILLTQ)

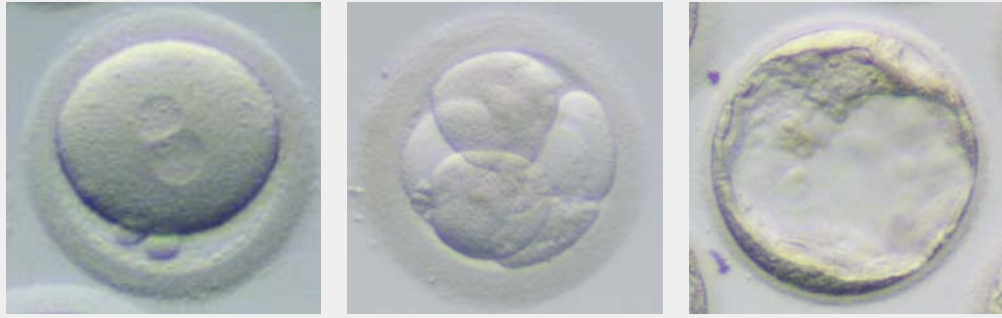
- ▶ Four-position turret and cartridges enable you to easily select the observation method and contrast for each specimen.
- ▶ Thin transmitted illumination stand makes it easy to access the top of the gantry while maintaining a low eye point.
- ▶ LEDs are cooler than a halogen lamps, reducing the risk of heat damages to your samples during long-duration experiments.
- ▶ Long-life (60,000 hours) LED light with low power consumption reduces running cost.



Research stereo microscope SZX16 with SZX2-ILLTQ

Choose Your Cartridge and See Your Research in Detail

Oocyte and embryo



▶ Use oblique and standard/high contrast cartridge to clearly view the polar body, pronucleus, and blastomere for quick decision-making.

C. elegans

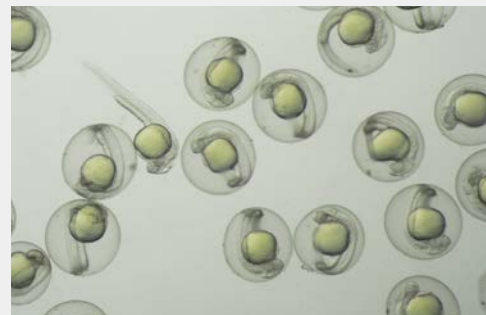


Standard contrast
(Easy observation and operation)



High contrast
(Confirm the organism's movement status and orbit)

Zebra fish



▶ Select oblique or brightfield observation methods and use the high-contrast cartridge to observe the internal structure of a zebra fish.

Cartridge lineup

Product	SZX2-CBFL	SZX2-CBF	SZX2-CBFH	SZX2-COBL	SZX2-COB	SZX2-COBH	SZX2-CSH	SZX2-CDF	SZX2-CPO
Method	BF	BF	BF	Oblique	Oblique	Oblique	Shade plate	DF	PO
Contrast	Low-con.	Standard	High-con.	Low-con.	Standard	High-con.			



All images are captured by stereo microscope with SZX2-ILLTQ.

Images are courtesy of

National Institute for Basic Biology, Spectrography and Bioimaging Facility, Joe Sakamoto Ph.D., Yasuhiro Kamei Ph.D. (cover page, upper right and lower left)

Department of Genetic Engineering

Faculty of Biology-Oriented Science and Technology Kindai University Kazuo Yamagata, PhD

Asada Ladies Clinic Dr. Yoshimasa Asada

(cover page, upper left and lower right. back cover page, upper three images)

• EVIDENT CORPORATION is ISO14001 certified.

• EVIDENT CORPORATION is ISO9001 certified.

• All company and product names are registered trademarks and/or trademarks of their respective owners.

• Images on the PC monitors are simulated.

• Specifications and appearances are subject to change without any notice or obligation on the part of the manufacturer.

EvidentScientific.com

EVIDENT

EVIDENT CORPORATION

Shinjuku Monolith, 2-3-1 Nishi-Shinjuku, Shinjuku-ku, Tokyo 163-0910, Japan

OLYMPUS